



Discarded needle (uncapped)

Who is at risk?

- Children playing and exploring local trails and parks find a needle
- Someone looking through garbage's for bottles
- A park maintenance person
- A 'Good Samaritan' who finds a needle and carries it with them to find a safe place to dispose of it or tries to re-cap it.
- City workers such as a waste disposal worker may get poked by needles hidden in garbage bags
- A housekeeper or janitor cleaning washrooms

Who To Call

If you find a discarded needle in a public place, and you don't feel comfortable disposing of it - the Melfort Fire Department will be dispatched to retrieve and safely dispose of it.

Call:

(306) 953-4284

24 hours a day / 7

days per week



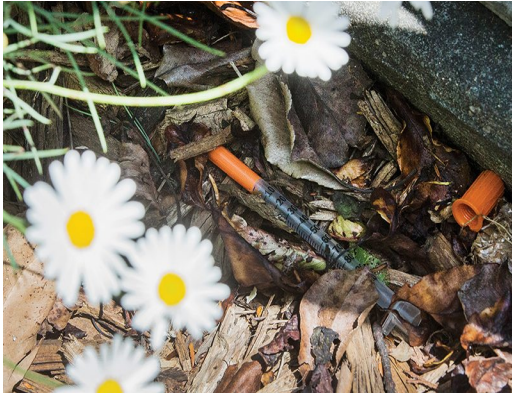
MELFORT FIRE DEPARTMENT

PO Box 2230
202 Burrows Ave. W.
Melfort, SK, S0E 1A0
(306) 752-5911



MELFORT FIRE DEPARTMENT

Safe Community Needle Management



Discarded needle (capped)

If You Get Poked by a Sharp...

- Immediately wash the area with soap and water
- Allow the wound to bleed freely
- Do not squeeze the wound area as this can cause tissue damage and increase the uptake of the pathogen
- Do not wash the area with antiseptics or bleach as this can damage the healthy tissue
- Go to your nearest emergency room immediately to seek health care attention.



Safe Needle Handling – Do's:

- **DO** Place used needles and other sharps in a 'sharps disposal container'. Where a 'sharps disposal container' is not available, a non-puncture resistant container made of thick opaque plastic (e.g., bleach bottle) can be used for disposing of the sharps wastes. Only fill the container $\frac{3}{4}$ full. Screw top on tightly, secure stop with tape and place into garbage bag for disposal with household garbage. Ensure your hand is not at risk of a poke by hanging onto the container.
- **DO** Keep all needles and other sharps and sharps disposal containers out of reach of children and pets.
- **DO** Pick up sharps with leather gloves, tweezers or tongs. Never with your bare hands.
- **DO** Wash hands thoroughly with soap and water after disposal.
- **DO** Always point the needle or sharp part away from you.



Safe Needle Handling – Don't:

- **DON'T** Throw loose sharps in the trash.
- **DON'T** Flush sharps down the toilet.
- **DON'T** Throw needles on the ground.
- **DON'T** Put sharps in your recycling bin.
- **DON'T** Try to remove, bend, break or recap needles used by another person. This can lead to accidental needle sticks, which may cause serious infections.
- **DON'T** Attempt to remove the needle without knowing the proper steps to pick up and dispose of sharps safely. If unsure, call the Needle Response number.